

NIVEK INDUSTRIES

PRODUCT CATALOGUE



The initial concept of TED was born when Kevin Cant, the founder of Nivek Industries, narrowly escaped serious injury in 2008 when the belly plate he was removing from a bulldozer slipped and fell. Kevin spent 3 years in the research, concept and design releasing the first TED prototype in 2011.

The design has undergone several upgrades and enhancements since its initial release and now boasts a whole range of attachments enabling it to make a fitter's maintenance job safer and physically less strenuous. Designed by a fitter, for fitters TED is becoming widely respected as a necessary workshop and pit tool by both fitters and management at a rapidly growing rate in Australia and overseas.

Since 2011, Nivek has grown its range with the release of the Lift Assist-40 (LA40) in 2019, Big TED in 2023, Lift Assist 80 (LA80), BOB range and REX in 2024. With all of these products, Nivek Industries is a one stop shop for all your fitting, maintenance and hauling needs so you can finish each job safely every time.

Copyright notices

Nivek is a registered trademark owned by Nivek Industries in Australia on 9th November 2011.
Trademark Number: 1458362

TED is a registered trademark owned by Nivek Industries in Australia on 10th July 2014.
Trademark Number: 1633766

Big TED is a registered trademark owned by Nivek Industries in Australia on 17th October 2022.
Trademark Number: 2254723

BOB Logo is a registered trademark owned by Nivek Industries in Australia on 2nd April 2024.
Trademark Number: 2381820

Tracked Elevating Device

Designed by a fitter for fitters, TED is the only remote controlled, all terrain, hydraulic jack on the market. Originally designed to removal belly guards safely, the TED is now a jack of all trades with over 40 maintenance enhancing attachments to perform a wide variety of tasks. Effortless, remote controlled operation keeps fitters out of the danger zone during critical lift and lowering stages of suspended load component removal and install. In addition to protecting against serious suspended load injuries, TED helps reduce workplace injuries such as chronic back problems and strain related injuries.

Page 6

Big TED

Big TED is a remote controlled, all terrain, scissor jack designed to support and lift loads of up to 3,000kgs ((6,610lbs). Big TED incorporates several user friendly features including a powered turntable, 80mm side shift, digital load display, AUX power for attachments and enhanced fault finding functionality. Effortless, remote controlled operation keeps fitters out of the danger zone, whilst still providing accurate movement, during critical lift and lowering stages and during suspended load component removal and install.

Page 42

Lift Assist 40

With six points of articulation and smart spring technology, the LA40 achieves a full range of horizontal and vertical movement. Apart from the obvious benefits to hand safety by reducing finger exposure to pinch points, the LA40 offers positive improvements to operator overall wellbeing through reduced manual handling and performance efficiency gains. The LA40 is compatible with the major pneumatic and hydraulic wrenches and drivers currently in the market.

Page 50

Lift Assist 80

The LA80 is designed to lift heavy components into place and hold them while being installed or removed. The LA80 is powered by two linear actuators resulting in smooth controllable movement with no bounce. With multiple points of articulation and modifiable setup, the LA80 allows for stable and precise alignment of components. By removing the requirement for maintenance personnel to have to lift and hold these heavy components in awkward positions, the LA80 enhances operator overall wellbeing through reduced manual handling.

Page 60



TED



Big TED



LA40



LA80

BOB 0.5T

The BOB 0.5T is a remote controlled, all terrain carrier designed to handle loads of up to 500kgs (1,100lbs). The dual 48V lithium batteries provide 4.6kWh of energy to the 3.5kW electric motor power unit, in turn driving the two independent hydraulic drive motors.

Built with rubber tracks, the BOB 0.5T will happily carry your load over any terrain to your required destination. By using the AUX power outlet, the BOB 0.5T can be fitted with custom made smart attachments to suit any customer requirements.

Page 66

BOB 1.5T

BOB 1.5T utilises the chassis, the reliable operating system and power train of the 0.5T BOB and replaces the rubber tracks with cast steel tracks to increase the load carrying capacity to 1,500kg (3,300lbs).

BOB 1.5T also maintains the innovative auxiliary system and smart attachment functionality, making it mobile powerhouse capable of undertaking any task.

Page 70

BOB 5T

BOB 5T is a remote controlled, all terrain carrier designed to handle loads of up to 5,000kgs (11,000lbs). Incorporating dual electric drive motors with a 14kWh battery supply, BOB 5T will carry your load over any terrain to your required destination.

BOB 5T can be fitted with custom made smart attachments to suit any customer heavy load carrying requirements. Smart attachments are controlled via the wireless remote control, allowing the operator to stand clear when in operation.

Page 74

REX

REX is a tough, compact, remote-controlled mini excavator. Incorporating a quick release hitch plate, operators can quickly and easily change from a bucket loader, to a trencher or to a hole digger to name a few. REX's hot-swappable battery system enables for a quick battery change resulting in continuous operation with minimal downtime. With a narrow body and low profile, REX can operate in confined spaces, under conveyor belts, in culverts or backyards with limited access.

Page 78



BOB 0.5T



BOB 1.5T

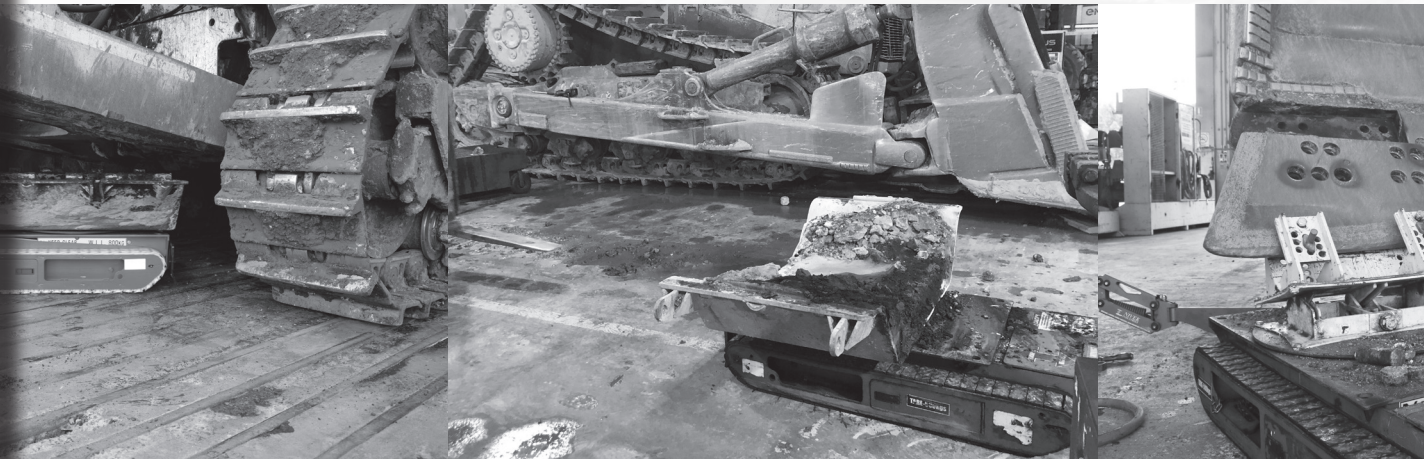


BOB 5T



REX

Tracked Elevating Device



CONTENTS

TED	8
Specifications	10
Dimensions	11
Extras / Upgrades.....	12
TED Attachments	14
Haul Truck Maintenance	14
Bulldozer Maintenance	20
Cutting Edge Maintenance	22
Adaptor Modules	24
General Purpose Tools.....	30
Storage and Transport	36



Tracked Elevating Device

Part No: TED-ASY-000-00

The Tracked Elevating Device, affectionately known as TED, was built primarily as a bulldozer belly plate jack. TED was designed to be low profile, self-propelled, remote controlled and all terrain.

The ability to lift heavy components, up to 800kg (1,760lbs), from underneath removes the suspended load hazard of many maintenance operations. The component can be pre-loaded onto TED, driven into position under the machine and then safely lifted into place and mounted, all via a remote control.

The remote-controlled operation allows maintenance personnel to distance themselves from load hazards during maintenance operations, particularly in the critical lowering phase of belly plate removal.

Having a TED on your worksite doesn't just safeguard your workers from potentially fatal suspended load crush injuries, it can also have a positive impact on fatigue prevention, reduce muscle strain injuries, and drastically improve efficiency across numerous repair and maintenance applications.

TED has a wide variety of attachments enhancing its capability to assist fitters working on haul trucks, bulldozers, grader cutting edges and more. For a full range of attachments and applications see the information enclosed below or for a custom attachment speak to the team at Nivek Industries.





RADIO CONTROLLED

TED is wirelessly controlled by a paired radio system operating within the 433-434MHz range on 1 of 32 different channels.



LOW PROFILE

With a compressed height of 315mm (12.5inch), TED will fit under most heavy bulldozers and then be driven out with the removed component on top.



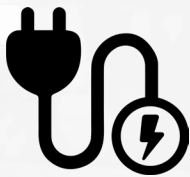
ALL TERRAIN

TED's tracks allow travel over virtually any surface allowing deployment in the field saving a fortune on machinery transport and down time.



LIFTING CAPACITY

TED has been built with an impressive 800kg (1,760lbs) safe working load lifting capacity.



SELF PROPELLED

A 12V battery system powers TED's hydraulic drive motors and scissor cylinders via a 2kW DC motor/pump.

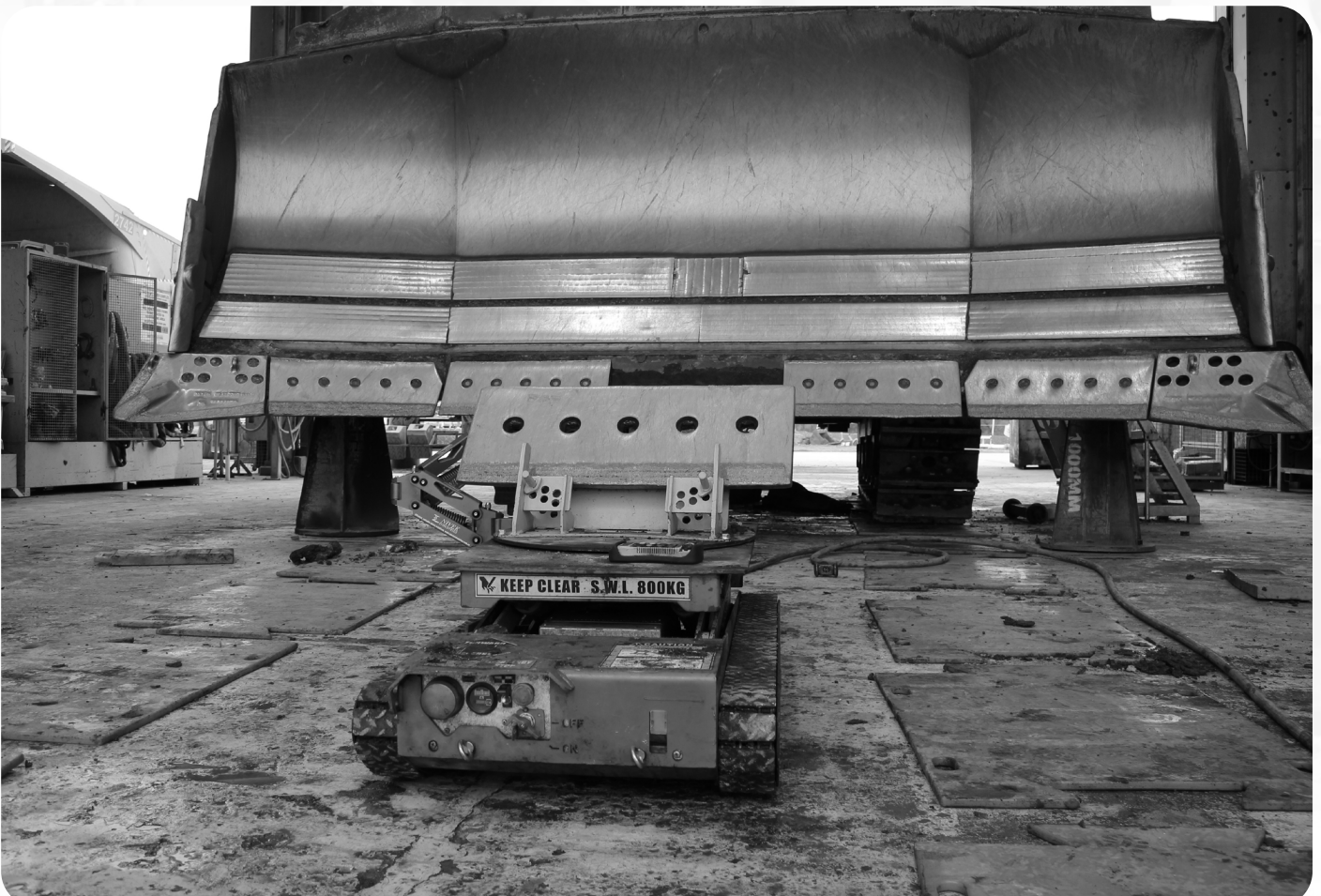


ADAPTABLE

TED has an extensive range of versatile attachments allowing operators to perform a variety of tasks safely and efficiently.

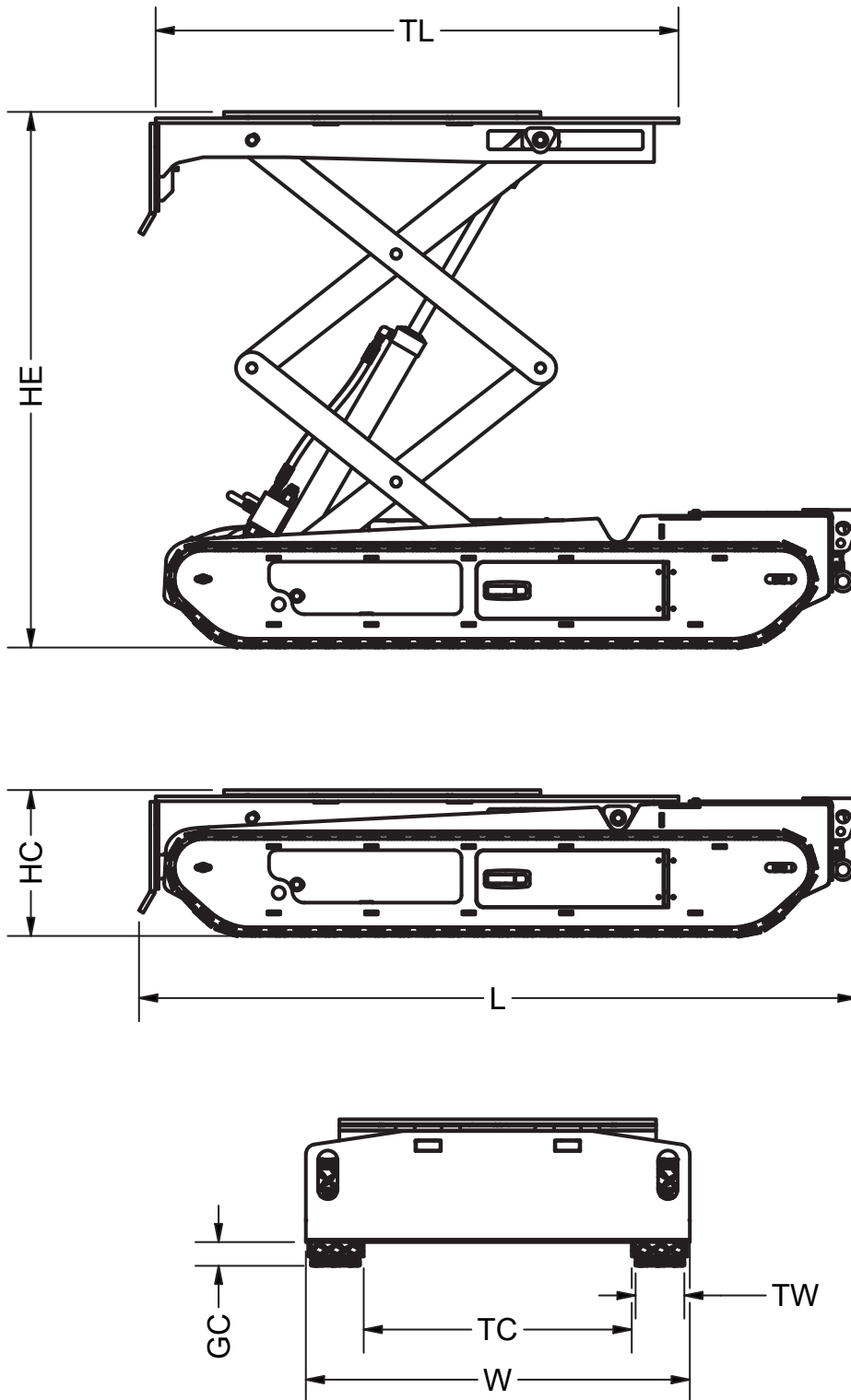
SPECIFICATIONS

Tare Weight (kg/lbs)	580 / 1,280
Safe Working Load (kg/lbs)	800 / 1,760
Ground Speed	Slow 0.7km/hr / 0.4MPH Fast 1.1km/hr / 1MPH
Drive Motors	Two HR-125 Hydraulic Motors 13.1 HP (continuous) SAE A Flange Mount, 1" Straight Woodruff key
Power Unit	Hydro-Tek Hydraulic Power Unit 12VDC, 2kW Motor 1.6cc Pump with 4L Tank
Battery System	12VDC 224AH Battery system Two 6VDC 224AH Deep-Cycle AGM batteries in series
Radio System	Magnatek MHR Radio Controller & Flexpro8 Transmitter (Paired system) 433-434Mhz operating frequency



DIMENSIONS (MM/INCH)

Length (L)	1,374 / 54.1	Table Length (TL)	1,073 / 42.25
Width (W)	778 / 30.6	Ground Clearance (GC)	65 / 2.55
Height Compressed (HC)	315 / 12.4	Track Clearance (TC)	550 / 21.65
Height Extended (HE)	1,172 / 46.15	Track Width (TW)	100 / 3.95



Extras / Upgrades

TED

Tracks

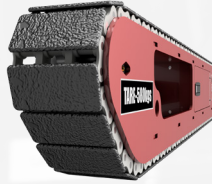
Part No: TED-DRV-001-00
Standard



Checker

The standard tracks for TED. As the name suggests, the cleat is made from checker plate.

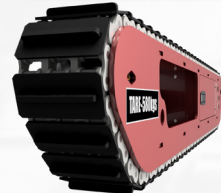
Part No: TED-DRV-001-00(N)
Upgrade



Neoprene

For those floors that require a less harsh track, the cleats have been coated with neoprene to provide some cushioning.

Part No: TED-DRV-001-00(G)
Upgrade



Grouser

If extra grip is required, the grouser track is perfect for providing additional pull in soft terrain or grip on icy surfaces.

Transmitter Parts

Part No: TED-ELE-019-04
Standard



Flexpro-8 Black Protector Cover

The Black Protector Cover comes standard with the Flexpro-8 Transmitter and will help protect the transmitter from small falls and general wear and tear.

Part No: TED-ELE-019-02
Accessory

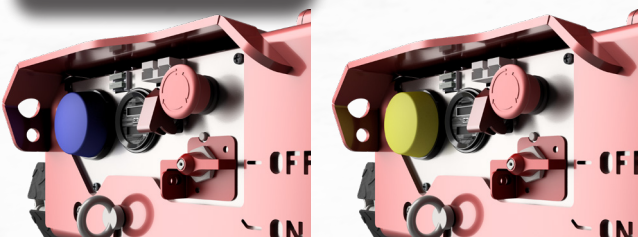


Extended Deadman Switch

The Extended Deadman Switch allows operators wearing gloves greater control of the switch when driving the machine.

Other

Part No: TED-ELE-007-XX
Option



Strobes

The strobe flashes when TED is powered on. A Blue (007-01) or Amber (007-02) strobe can be fitted.

Part No: TED Sticker Kit (XX)
Option



Sticker Kits

Nivek offer customers the Sticker Kits in several languages including English Metric, English Imperial, Spanish and Chinese.

Batteries and Chargers



TED comes standard with two 6VDC Deep-Cycle AGM batteries wired up in series to produce a 12VDC battery system. For additional run time and battery life, TED can be upgraded to the 12VDC Lithium batteries wired up in parallel.

There is also a wide variety of chargers available to suit individual needs.

BATTERY SYSTEM						
Part Number	Type	Voltage	Qty	Layout	System (kwh)	Runtime (~hrs)
DC224-6	AGM	6	2	Series	2.6	1-2
512-LBAT-12-100	Lithium	12	2	Parallel	2.4	2-3
CHARGER						
Part Number	Type	Voltage (Input)	Voltage (Output)	Amps	IP67 Rating	Recharge time (~hrs)
SEC-1230UL	AGM	110	12	30		8
BCS-A1220	AGM	240	12	20		10
BCS-WSC-1250	AGM	240	12	50		4.5
IPC-1225-A-NIV	AGM	240	12	25	Y	9
IPC-1225-L-NIV	Lithium	240	12	25	Y	9
BCS-AL 1220	Lithium	240	12	20		10
BC-1250-MBL	Lithium	240	12	50		4.5

Haul Truck Maintenance

TED

Steer Cylinder Cradle

Part No: TED-ATT-005-01-X



The Steer Cylinder Cradle is designed to support steer cylinders and other cylindrical components during removal and installation.

The Steer Cylinder Cradle can be mounted onto any of the adaptor modules for greater alignment of components.

There are currently three different sizes, small (TED-ATT-005-01-S) with a total height of 145mm, medium (TED-ATT-005-01-M) at 175mm and large (TED-ATT-005-01-L) at 200mm.

SPECIFICATIONS

Safe Working Load	800kg / 1,760lbs
Attachment Type	Turntable
Tare Weight	16kg / 36lbs
Dimensions (LxWxH)	570 x 340 x 200mm 22.4 x 13.4 x 7.9inch

APPLICATIONS

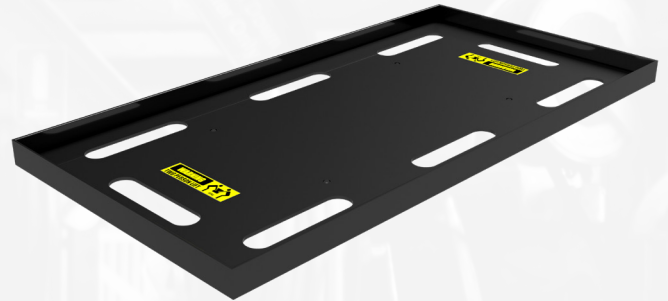
- Tie Rods
- Steer Cylinders



Sump Tray

Part No: TED-ATT-014-00

The Sump Tray is used primarily with either the Low Profile Pivot Table or Slope Jig to alter the table angle and can be used as either a flat tray or with a 45mm (1.8inch) edge around the frame.



APPLICATIONS

- Sumps
- Bulky Items

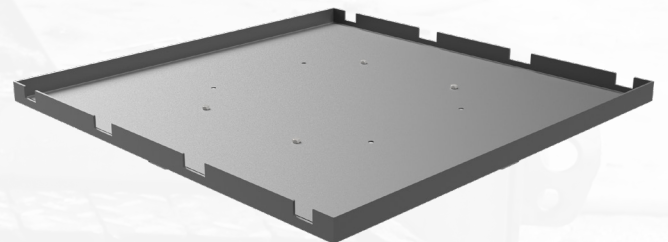
SPECIFICATIONS

Safe Working Load	200kg / 440lbs
Attachment Type	Turntable
Tare Weight	43kg / 95lbs
Dimensions (LxWxH)	122 x 62 x 50mm 4.8 x 2.4 x 2inch

Sound Suppression Tray

Part No: TED-ATT-028-00

The Sound Suppression Tray has been specifically designed to assist in the removal and installation of sound suppression panels.



APPLICATIONS

- Sound Suppression Plates
- Bulky Items

SPECIFICATIONS

Safe Working Load	200kg / 440lbs
Attachment Type	Turntable
Tare Weight	51kg / 113lbs
Dimensions (LxWxH)	1,100 x 1,100 x 500mm 43.3 x 43.3 x 19.7inch

Strut Spindle Cap Tool (SSCT)

Part No: TED-ATT-025-00



Strut Spindle Caps of various sizes can be safely removed and replaced using the SSCT. The three (3) threaded bolts offer width and angle adjustment to accommodate varying strut spindle caps.

The SSCT is designed to take the weight of the strut spindle cap and removal tool only. The strut itself must be supported as per manufacturers specifications.

SPECIFICATIONS

Safe Working Load	800kg / 1,760lbs
Attachment Type	Turntable
Tare Weight	25kg / 56lbs
Dimensions (LxWxH)	550 x 550 x 600mm 21.7 x 21.7 x 23.6inch

APPLICATIONS

- Strut Spindle Caps
- Shim Adjustment

Brake/Steer Pump

Part No: TED-ATT-044-00



The Brake/Steer Pump Tool can be manually pivoted +/- 5 degrees to allow for spline alignment and incorporates an interchangeable pump mounting weldment allowing operators to use the tool for various pumps.

SPECIFICATIONS

Safe Working Load	200kg / 440lbs
Attachment Type	Turntable
Tare Weight	53kg / 117lbs
Dimensions (LxWxH)	585 x 500 x 491mm 23.1 x 19.7 x 19.4inch

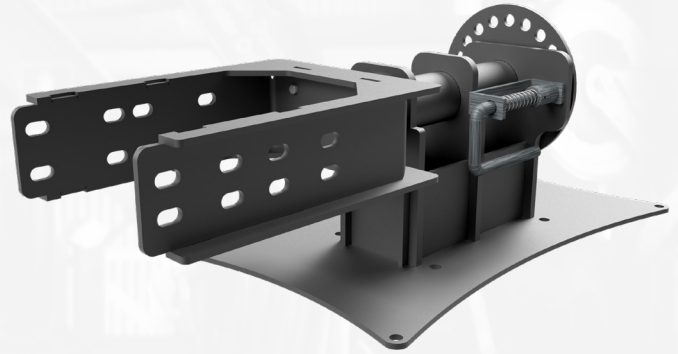
APPLICATIONS

- Komatsu 830E and 930E

Transmission Pump Tool

Part No: TED-ATT-036-00

The Transmission Pump Tool can be rotated manually and incorporates an interchangeable mounting weldment allowing operators to use the tool for various pumps.



APPLICATIONS
<ul style="list-style-type: none"> 793 Transmission Pumps

SPECIFICATIONS	
Safe Working Load	200kg / 440lbs
Attachment Type	Turntable
Tare Weight	26kg / 58lbs
Dimensions (LxWxH)	770 x 340 x 276mm 30.4 x 13.4 x 10.9inch

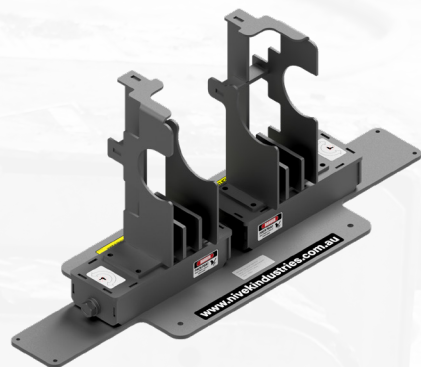
A Frame Tool

Part No: TED-ATT-045-00

The A Frame Pin Tool carries the pin and mounting blocks used to secure the A Frame to the chassis.

When the A Frame Pin Tool is mounted on the turn table and combined with the Low Profile Pivot Table (Page 18), operators can line up the pin and mounting blocks for installation or removal while eliminating the risk created with unsecured and suspended loads.

With an interchangeable pin crown, we can supply you with the right tool for the job.



APPLICATIONS
<ul style="list-style-type: none"> A frame pin replacement on CAT 777, 783 and 793.

SPECIFICATIONS	
Safe Working Load	200kg / 440lbs
Attachment Type	Turntable
Tare Weight	68kg / 150lbs
Dimensions (LxWxH)	400 x 1230 x 508mm 15.7 x 48.4 x 20inch

Steering Arm Tool

Part No: TED-ATT-043-XXX



The Steering Arm Tool has been specifically designed to assist in the removal and installation of various Komatsu and CAT Steering Arms. Due to the weight of the attachment, it has been designed to be forkliftable even when loaded.

Being of a modular design, the base can be fitted with various crowns suitable for Komatsu 830E, 930E & 960E and CAT 793F trucks.

Nivek Industries is capable of designing additional steering arm crowns should you require a different model.

SPECIFICATIONS

Safe Working Load	800kg / 1,760lbs
Attachment Type	Turntable
Tare Weight	See table for weights
Dimensions (LxWxH)	See table for dimensions

APPLICATIONS

Komatsu 830E, 930E, 960E and CAT 793F Steering Arms.

BASE AND CROWNS

Picture	Specifications	
	Name	Steering Arm Base
	Part No	TED-ATT-043-000-00
	Tare Weight	100kg / 220lbs
	Dimensions (LxWxH)	1,085 x 650 x 183mm 43 x 26 x 7inch
	Name	Komatsu 830E
	Part No	TED-ATT-043-007-00
	Tare Weight	17kg / 38lbs
	Dimensions (LxWxH)	400 x 400 x 216mm 16 x 16 x 8.5inch
	Name	Komatsu 930E
	Part No	TED-ATT-043-004-00
	Tare Weight	25kg / 56lbs
	Dimensions (LxWxH)	400 x 400 x 353mm 16 x 16 x 14inch
	Name	Komatsu 960E
	Part No	TED-ATT-043-006-00
	Tare Weight	24kg / 53lbs
	Dimensions (LxWxH)	400 x 400 x 291mm 16 x 16 x 14inch
	Name	CAT 793F
	Part No	TED-ATT-043-008-00
	Tare Weight	65kg / 144lbs
	Dimensions (LxWxH)	470 x 1098 x 693mm 19 x 44 x 27.5inch

Bulldozer Maintenance

TED

Belly Plate Stand (Legs)

Part No: TED-ACC-001



This set of four sturdy stands will support the load of a belly plate up to 800kgs (1,760lbs), freeing TED up to continue with other jobs. Once the legs are securely attached to the removed belly plate, lower TED down and leave the belly plate to be supported by the Belly Plate Stand.

SPECIFICATIONS

Safe Working Load	800kg / 1,760lbs
Attachment Type	Accessory
Tare Weight	24kg / 53lbs
Dimensions (LxWxH) (Each Leg)	914 x 150 x 100mm 31.9 x 5.2 x 3.5inch

APPLICATIONS

Used to support removed belly plates.

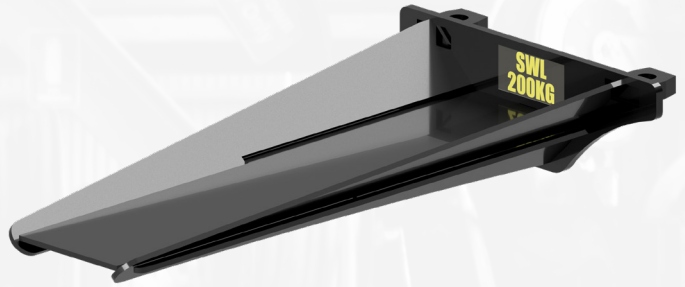


Track Roller Carrier

Part No: TED-ATT-010-00

The Track Roller Carrier's intended purpose is to aid in the removal and replacement of track rollers, lowering the manual handling component and removing the need for placing hands in harm's way.

When used by itself the Track Roller Carrier has a SWL of 200kg (440lbs), however if used with the TED Counter Balance (Page 28) the SWL can be increased to 400kg (880lbs).



APPLICATIONS
<ul style="list-style-type: none"> CAT D-9, D-10 & D-11 Dozers Komatsu tracked loaders and dozers Small civil excavators, diggers and loaders

SPECIFICATIONS	
Safe Working Load	400kg / 880lbs
Attachment Type	Front
Tare Weight	15kg / 34lbs
Dimensions (LxWxH)	670 x 410 x 135mm 26.4 x 16.1 x 5.3inch

Front Belly Plate Cradle

Part No: TED-ATT-023-00

The Front Belly Plate Cradle is designed to support the Front Belly Plate of D-11 dozers at the right angle for safe removal and transportation.

The raised platform provides additional stability for the belly plate by holding it horizontal and allows it to be rotated on the turntable which allows it to be maneuvered between the ripper tyne and the tracks.



APPLICATIONS
<p>Safely remove and replace front belly plates on D-11 Dozers.</p>

SPECIFICATIONS	
Safe Working Load	800kg / 1,760lbs
Attachment Type	Turntable
Tare Weight	13kg / 29lbs
Dimensions (LxWxH)	745 x 335 x 90mm 29.3 x 13.2 x 3.5inch

Cutting Edge Maintenance

TED

Cutting Edge Tool

Part No: TED-ATT-006-01



The Cutting Edge Tool is used to lower manual handling on CET maintenance. Rest the CET due for removal in the Cutting Edge Tool and lift or lower into place via TED's remote control operation.

The Cutting Edge Tool can be mounted onto any of the adaptor modules for greater alignment of components.

SPECIFICATIONS

Safe Working Load	800kg / 1,760lbs
Attachment Type	Turntable
Tare Weight	10kg / 23lbs
Dimensions (LxWxH)	570 x 340 x 200mm 22.4 x 13.4 x 7.9inch

APPLICATIONS

- CAT Dozers up to D-11
- Komatsu Dozers
- Rubber tyred Dozers

Double Sided Cutting Edge Tool

Part No: TED-ATT-020-00



The Double Sided Cutting Edge Tool is designed to aid in routine CET maintenance, the Double Sided Cutting Edge Tool allows operators to remove, clean, turn and re-install the CET.

The Double Sided Cutting Edge Tool can be mounted onto any of the Adaptor Modules for greater alignment of components.

SPECIFICATIONS

Safe Working Load	800kg / 1,760lbs
Attachment Type	Turntable
Tare Weight	21kg / 47lbs
Dimensions (LxWxH)	570 x 450 x 160mm 22.4 x 17.7 x 6.3inch

APPLICATIONS

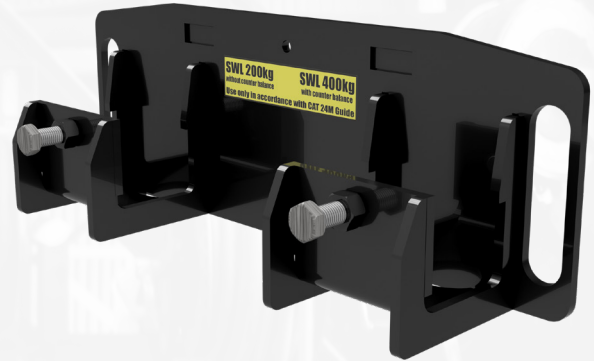
Maintain and rotate cutting edges up to 800kg (1,760lbs).

Grader Cutting Edge

Part No: TED-ATT-021-00

The Grader Cutting Edge Tool can be utilised to take the weight of the CET from a variety of graders. The attachment is fitted with two (2) adjustment bolts which can be tightened to assist in stabilising the CET during transit and installation.

When used by itself the Grader Cutting Edge has a SWL of 200kg (440lbs), however if used with the TED Counter Balance (Page 28) the SWL can be increased to 400kg (880lbs).



APPLICATIONS
<ul style="list-style-type: none"> CAT Graders all sizes up to 24M Komatsu Graders John Deere Graders

SPECIFICATIONS	
Safe Working Load	400kg / 880lbs
Attachment Type	Front
Tare Weight	21kg / 47lbs
Dimensions (LxWxH)	650 x 150 x 240mm 25.6 x 5.9 x 9.4inch

Corner Cutting Edge Tool (CCET)

Part No: TED-ATT-024-00

The CCET is fully adjustable making it perfect for corner CET. Operators can adjust the support pins in any combination of holes to achieve an angle of up to +/- 10 degrees. The CCET also has two retaining bolts which can be used to support different CET thicknesses.

The CCET works best when combined with the Low Profile Pivot Table allowing it to be aligned with the angle of the CET being removed/installed.



APPLICATIONS
<ul style="list-style-type: none"> CAT Dozers up to D-11 Komatsu Dozers Rubber tyred Dozers

SPECIFICATIONS	
Safe Working Load	800kg / 1,760lbs
Attachment Type	Turntable
Tare Weight	21kg / 47lbs
Dimensions (LxWxH)	560 x 335 x 210mm 22 x 13.2 x 8.3inch

Adaptor Modules

TED has a range of adaptor modules that can be used with various attachments to enhance their functionality and performance. Below is a table of compatible configurations.

For detailed specifications for each adapter module, please refer to its corresponding section.

ADAPTER MODULE CONFIGURATIONS

Attachment	Type		Adapter Modules						
	Table	Front	Low Profile Pivot Table	Slope Jig	Forward Shift	Side Shift	Extension Block	Elevated Table	Counter Balance
Steer Cylinder Cradle	Y		O	O	O	O	O	O	
Sump Tray	Y		R	R					
Sound Suppression Tray	Y		O	O					
Strut Spindle Cap Tool	Y							O	
Brake/Steer Pump	Y						O	R	
Transmission Pump Tool	Y			O	O	O		O	
A Frame Pin Tool	Y		E						
Steering Arm Tool	Y								
Track Roller Carrier		Y							R
Front Belly Plate Cradle	Y								
Cutting Edge Tool	Y		O		O	O	O		
Double Sided Cutting Edge Tool	Y		O		O	O	O		
Grader Cutting Edge		Y							R
Corner Cutting Edge Tool	Y		E		O	O	O		
Universal Mounting Plate	Y		O	O	O	O	O	O	
Tyre Handler		Y							R
Stand Locating Tool		Y							R
Front Jib		Y							E
Boomerang Stand		Y							R
Adjustable Forks		Y							E

Low Profile Pivot Table (LPPT)

Part No: TED-ATT-030-00



The LPPT is perfect for supporting components on an angle and works in conjunction with other turntable mounting attachments such as the Sump Tray and Cutting Edge Attachments.

The LPPT is capable of fine adjustment +/- 15 degrees and provides fitters with superior flexibility and control.

SPECIFICATIONS

Safe Working Load	800kg / 1,760lbs
Attachment Type	Turntable
Tare Weight	22kg / 49lbs
Dimensions (LxWxH)	565 x 335 x 115/160mm 22.3 x 13.2 x 4.6/6.3inch

APPLICATIONS

Best used in conjunction with:

- Corner Cutting Edge Tool
- Sump Tray
- Sound Suppression Tray

Slope Jig

Part No: TED-ATT-041-00



The Slope Jig was designed to be used primarily with the Universal Mounting Plate to allow operators to undertake tasks where the intended job is at an angle. Component specific attachments can also be bolted directly onto the Slope Jig.

The Slope Jig can support loads of up to 800kg (1,760lbs) and can be manually adjusted to achieve angles from 0 to 45 degrees.

SPECIFICATIONS

Safe Working Load	800kg / 1,760lbs
Attachment Type	Turntable
Tare Weight	28kg / 62lbs
Dimensions (LxWxH)	600 x 335 x 95/450mm 23.6 x 13.2 x 3.8/17.7inch

APPLICATIONS

Used in conjunction with the Universal Mounting System for safer, easier removal and replacement of:

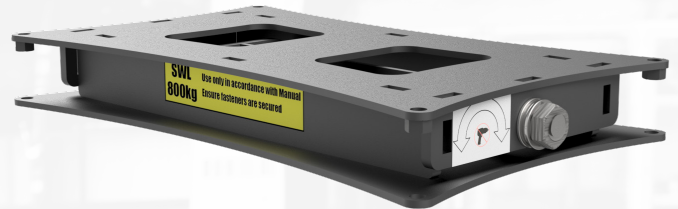
- Y-Links on CAT Trucks
- Steering Arms on CAT Trucks
- LeTourneau Ball Caps

Forward Shift

Part No: TED-ATT-032-00

The Forward Shift module attaches to the turntable and allows operators to mount various other component specific attachments onto it.

The module can be manually adjusted +/- 40mm (1.6inch) forwards or rearwards allowing operators greater control when lining up components during installation.



APPLICATIONS

Best used in conjunction with the Side Shift, Pivot Table and Universal Mounting System to assist with:

- Fitment of hydraulic pumps

SPECIFICATIONS

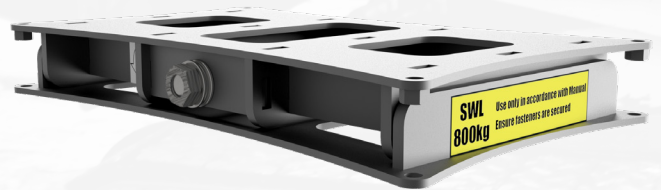
Safe Working Load	800kg / 1,760lbs
Attachment Type	Turntable
Tare Weight	24kg / 53lbs
Dimensions (LxWxH)	565/650 x 335 x 70mm 22.3/25.6 x 13.2 x 2.8inch

Side Shift

Part No: TED-ATT-035-00

The Side Shift module attaches to the turntable and allows operators to mount various other component specific attachments onto it.

The module can be manually adjusted +/- 50mm (2inch) sideways allowing operators greater control when lining up components during installation.



APPLICATIONS

Best used in conjunction with the Forward Shift, Pivot Table and Universal Mounting System to assist with:

- Fitment of hydraulic pumps

SPECIFICATIONS

Safe Working Load	800kg / 1,760lbs
Attachment Type	Turntable
Tare Weight	25kg / 56lbs
Dimensions (LxWxH)	565 x 335/380 x 70mm 22.3 x 13.2/15 x 2.8inch

Extension Block

Part No: TED-ATT-012-00



The Extension Block mounts directly onto the TED Turntable allowing operators to achieve an additional 300mm (11.8inch) of reach per block and up to a maximum of two blocks or 600mm (23.6inch).

Other turntable attachments can then be mounted on top.

SPECIFICATIONS

Safe Working Load	800kg / 1,760lbs
Attachment Type	Turntable
Tare Weight	18kg / 40lbs
Dimensions (LxWxH)	565 x 335 x 300mm 22.3 x 13.2 x 11.8inch

APPLICATIONS

Commonly used in conjunction with:

- Steer Cylinder Cradle
- Slope Jig
- Pivot Table
- Sump Tray

Elevated Table

Part No: TED-ATT-033-00



The Elevated Table provides operators with an additional 600mm (23.6inch) of reach whilst not compromising stability.

The Elevated Table has its own built in turntable which other attachments can be bolted onto.

SPECIFICATIONS

Safe Working Load	650kg / 1,430lbs
Attachment Type	Turntable
Tare Weight	144kg / 318lbs
Dimensions (LxWxH)	1080 x 650 x 630mm 42.6 x 25.6 x 24.9inch

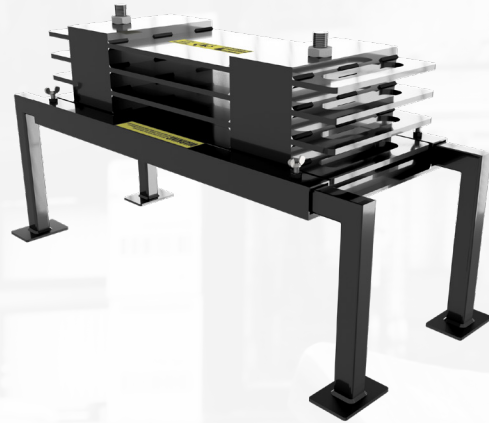
APPLICATIONS

To be used with Hoist Pump and Steering Pump. Other attachments can be mounted on the top.

Counter Balance

Part No: TED-ATT-018-00

The Counter Balance is designed to be mounted onto the back of the table therefore increasing the lifting capacity of the front attachments. The Counter Balance comes with removable legs allowing for quick mounting and removal.



APPLICATIONS

Commonly used in conjunction with:

- Adjustable Fork Tynes
- Grader Cutting Edge
- Track Roller Carrier
- Tyre Handler

SPECIFICATIONS

Safe Working Load	N/A
Attachment Type	Table
Tare Weight	235kg / 518lbs
Dimensions (LxWxH)	845 x 400 x 245mm 33.3 x 15.8 x 9.7inch



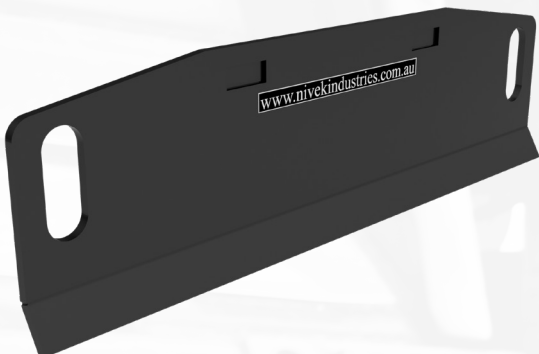


General Purpose Tools

TED

Dozer Blade

Part No: TED-ATT-002-01



The Dozer Blade comes standard with every TED and is primarily used to clear a level working area allowing for a stabler and therefore safer operation.

When the blade is fitted in the bottom mounting port it will just touch the ground when TED is fully compressed, perfect for pushing debris off concrete floors.

SPECIFICATIONS

Safe Working Load	N/A
Attachment Type	Front
Tare Weight	15kg / 34lbs
Dimensions (LxWxH)	787 x 85 x 225mm 31 x 3.4 x 8.9inch

APPLICATIONS

- Clear a level working area
- Clearing debris
- Generally pushing stuff around

Tyre Handler

TED-ATT-016-00



The Tyre Handler is designed to support tyres during removal and installation on a range of vehicles. The top arm lengths can be adjusted to hold the tyre securely in place. Each arm is fitted with a roller, enabling the tyre to be rotated for ease of lining up bolt holes.

When used by itself the Tyre Handler has a SWL of 200kg (440lbs), however if used with the TED Counter Balance (Page 28) the SWL can be increased to 400kg (880lbs).

SPECIFICATIONS

Safe Working Load	400kg / 880lbs
Attachment Type	Front
Tare Weight	40kg / 89lbs
Dimensions (LxWxH)	1450 x 505 x 555mm 57.1 x 19.9 x 21.9inch

APPLICATIONS

Use to assist with installation and removal of tyres on:

- Water Carts & Service Trucks (size dependent)
- Road Trucks
- Utes and Passenger vehicles

Stand Locating Tool

Part No: TED-ATT-003-01

TED

The Stand Locating Tool has been designed to move stands around under machinery removing the manual handling element, and removing the need for fitters to be under suspended loads whilst placing stands.

When used by itself the Stand Locating Tool has a SWL of 200kg (440lbs), however if used with the TED Counter Balance (Page 28) the SWL can be increased to 400kg (880lbs).



APPLICATIONS

Safely position various types of stands under suspended loads.

SPECIFICATIONS

Safe Working Load	400kg / 880lbs
Attachment Type	Front
Tare Weight	8kg / 18lbs
Dimensions (LxWxH)	350 x 390 x 155mm 13.8 x 15.4 x 6.2inch



Front Jib

Part No: TED-ATT-031-00



Move heavy awkward loads from above with the handy multi-purpose Jib. The Jib has three (3) extension settings which can be adjusted by simply removing the adjustment bolt, sliding the extension arm to the desired position and refasten the bolt through the appropriate hole.

When used by itself the Front Jib has a SWL of 200kg (440lbs), however if used with the TED Counter Balance (Page 28) the SWL can be increased to 400kg (880lbs).

SPECIFICATIONS

Safe Working Load	400kg / 880lbs
Attachment Type	Front
Tare Weight	20kg / 44lbs
Dimensions (LxWxH)	580-780 x 500 x 250mm 22.9-30.1 x 19.7 x 9.9inch

APPLICATIONS

Lift a wide variety of awkward loads:

- Irregular shaped items
- Mechanical Components

Boomerang Stand

Part No: TED-ATT-034-00



Designed to assist in moving Boomerang Stands into position. The attachment has been designed to carry the Boomerang Stand in three different positions to allow operators to place the stands up against a wall or obstacle.

When used by itself the Boomerang Stand has a SWL of 200kg (440lbs), however if used with the TED Counter Balance (Page 28) the SWL can be increased to 400kg (880lbs).

SPECIFICATIONS

Safe Working Load	400kg / 880lbs
Attachment Type	Front
Tare Weight	46kg / 102lbs
Dimensions (LxWxH)	760 x 500 x 250mm 30 x 19.7 x 9.9inch

APPLICATIONS

Removal and replacement of Boomerang Stands without manual handling.

Adjustable Fork

Part No: TED-ATT-022-00

TED

The Adjustable Fork Tynes have been designed to assist in the movement of a variety of stands, tooling and mechanical components in tight low spaces without the need for manual handling. The tynes width can be manually adjusted quickly up to a separation of 445mm (17.6inch).

When used by itself the Adjustable Fork has a SWL of 200kg (440lbs), however if used with the TED Counter Balance (Page 28) the SWL can be increased to 400kg (880lbs).



APPLICATIONS

Move around without manual handling:

- Stands
- Irregular shaped tooling
- Pallets
- Mechanical Components

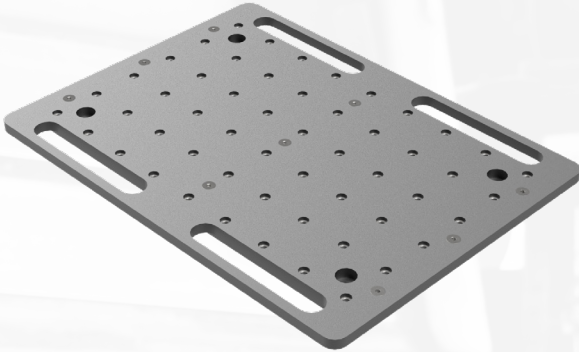
SPECIFICATIONS

Safe Working Load	400kg / 880lbs
Attachment Type	Front
Tare Weight	47kg / 104lbs
Dimensions (LxWxH)	845 x 800 x 360mm 33.3 x 31.5 x 14.2inch



Universal Mounting Plate

Part No: TED-ATT-038-00



The Universal Mounting Plate was designed to allow operators to arrange different types of support frames in a multitude of configurations depending on the task they wish to perform.

The Universal Mounting Plate has a series of M12 screw points laid out in a 6x9 grid at 75mm (3inch) spacing, allowing operators to fix the brackets on either orientation.

The Universal Mounting Plate can be mounted onto any of the adapter modules.

SPECIFICATIONS

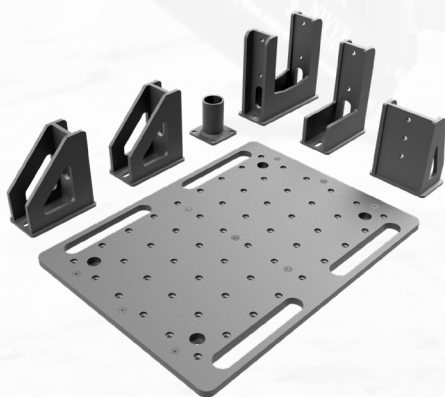
Safe Working Load	800kg / 1,760lbs
Attachment Type	Turntable
Tare Weight	37kg / 82lbs
Dimensions (LxWxH)	700 x 520 x 22mm 27.6 x 20.5 x 1inch

APPLICATIONS

Can be setup to support a wide variety of oddly shaped components. See descriptions in the support frames table for ideas on how to utilise the Universal Mounting System.

Universal Mounting System

Part No: TED-ATT-039-00



The support frames can be combined with tie down points (e.g. M12 eyebolt) to effectively support and secure all sorts of different shaped loads.

Included in package:

- 1x Universal Mounting Plate
- 4x V-Frame
- 1x Circle Frame
- 2x U-Frame
- 2x L-Frame
- 3x Stopper Frames




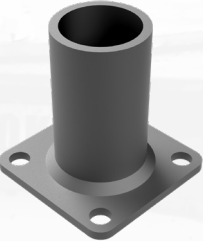
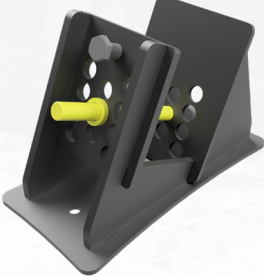
SPECIFICATIONS

Safe Working Load	800kg / 1,760lbs
Attachment Type	Turntable
Tare Weight	See table for weight
Dimensions (LxWxH)	See table for dimensions

APPLICATIONS

Can be setup to support a wide variety of oddly shaped components. See descriptions in the support frames table for ideas on how to utilise the Universal Mounting System.

SUPPORT FRAMES

Picture	Specifications		Description
	Name	U-Frame	<p>The U-Frame can be utilized to capture a component within the 160mm / 6.3inch wide cradle.</p> <p>Suitable for applications where the component is long and relatively skinny with a flat bottom.</p>
	Part No	TED-ATT-039-01	
	Tare Weight	9kg / 20lbs	
	Dimensions (LxWxH)	265 x 105 x 256mm 10.5 x 4.2 x 10.1inch	
	Name	L-Frame	<p>Two L-Frames can be used where the component is more than 160mm in width, or a single L-Frame if the component is an irregular shape.</p>
	Part No	TED-ATT-039-02	
	Tare Weight	6kg / 14lbs	
	Dimensions (LxWxH)	185 x 105 x 256mm 7.3 x 4.2 x 10.1inch	
	Name	Stopper Frame	<p>The Stopper Frames can be arranged as required and will act as a barrier to limit any movement from the component.</p>
	Part No	TED-ATT-039-03	
	Tare Weight	5kg / 12lbs	
	Dimensions (LxWxH)	115 x 160 x 206mm 4.6 x 6.3 x 4.2inch	
	Name	Circle Frame	<p>The Circle Frame has a diameter of 60mm and can be used to hold components with holes or circular edges in place.</p>
	Part No	TED-ATT-039-04	
	Tare Weight	2kg / 5lbs	
	Dimensions (LxWxH)	100 x 100 x 106mm 4 x 4 x 4.2inch	
	Name	V-Frame	<p>Two V-Frames can be used together to support cylindrical items. They can be spaced close together or further apart depending on the diameter of the component.</p>
	Part No	TED-ATT-039-05	
	Tare Weight	6kg / 14lbs	
	Dimensions (LxWxH)	185 x 100 x 206mm 7.3 x 4 x 8.2inch	
	Name	CET Frame	<p>The CET frame can be used to support various styles of cutting edges in place of the standard cutting edge attachments detailed on Page 22.</p>
	Part No	TED-ATT-042-00	
	Tare Weight	10kg / 23lbs	
	Dimensions (LxWxH)	325 x 165 x 210mm 12.8 x 6.5 x 8.3inch	

Storage and Transport

TED

TED's Home

Part No: TED-ACC-003-00



Keep TED and attachments neatly stored away in TED's Home. TED's Home has tie down points and forklift guides to allow users to transport the whole system if required.

The attachment storage system allows easy access and secure fixing points for multiple TED attachments. There is an upper shelf where users can store attachments and a hanging frame for turntable mounted attachments.

SPECIFICATIONS

Safe Working Load	1,100kg / 2,420lbs
Attachment Type	Accessory
Tare Weight	150kg / 330lbs
Dimensions (LxWxH)	1,570 x 950 x 1,215mm 61.9 x 37.5 x 47.9inch

APPLICATIONS

- Storage of TED
- Storage of TED Attachments
- Forkliftable

Attachment Stand

Part No: TED-ACC-005-00



With the ever increasing range of TED attachments, additional storage space is required. The TED Attachment Stand is a sturdy, adjustable shelf designed to store multiple attachments.

The stand is flat pack in design and the three (3) upper shelves can be installed at 150mm (5.9inch) increments. The stand also comes with side mounting brackets, which can be used to store the Universal Table, Track Roller Carrier and the Stand Locating Tool.

SPECIFICATIONS

Safe Working Load	200kg / 440lbs (per shelf)
Attachment Type	Accessory
Tare Weight	260kg / 574lbs
Dimensions (LxWxH)	1,300 x 700 x 1,510mm 51.2 x 27.6 x 59.5inch

APPLICATIONS

- Bulk storage of TED Attachments

TED Sleeping Bag

Part No: TED-ACC-002-00
Small

Part No: TED-ACC-002-01
Large

The TED Sleeping Bag is a durable throw over cover to keep the workshop dust and grime off your TED. The large TED Sleeping Bag is big enough to cover the entire TED home to keep not only TED clean, but all the attachments stored on the home as well.

Made from a durable canvas, the Sleeping Bags not only keep the dust and grime off TED, but they are also water resistant and will protect TED from potential water damage.



APPLICATIONS

- Protect TED from dust and debris when not in use

SPECIFICATIONS

Attachment Type	Accessory
Dimensions (LxWxH) Small	1,900 x 1180 x 400mm 74.8 x 46.5 x 15.8inch
Dimensions (LxWxH) Large	1,900 x 1180 x 1,215mm 74.8 x 46.5 x 47.9inch



Pit Rescue Trailer

TED-ACC-004-00

Nivek's Pit Rescue Trailer is built in-house and is made handle the toughest of haul roads and meet or exceed mine site requirements. Ideal for contractors working on multiple sites. It is the perfect way to transport TED from workshop to pit, or site to site.

With a 1.6T rated axle, Landcruiser 5 stud tyres (spare included) and a frame constructed from 50x50x3mm Square Hollow Section and 3mm mild steel plate for the floor and walls, the Nivek Pit Rescue Trailer is extremely durable. The frame has been powder coated throughout to ensure it is protected from the elements and will remain in good condition for many years.

A spring assisted tail gate can be pulled down to become an access ramp for TED, allowing it to be unloaded and loaded independently. The ramp has built in guide rails and anti-slip coating to assist operators when driving up the ramp.

Attachment storage pockets have been built into the frame allowing operators to store and transport the required attachments to the job site. A heavy-duty cargo net is also provided to ensure the attachments stay in the trailer during transport.





PAYLOAD CAPACITY

With a GVM of 1,600kg, the trailer has a maximum payload capacity of 900kg, allowing it to carry TED and several of its attachments.



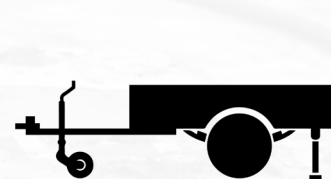
RAMP

A spring assisted tailgate becomes a ramp, allowing operators to unload and load TED quickly, safely, and independently.



TOUGH

With a 1.6T axle, Landcruiser 5 stud tyres, 3mm thick steel throughout, the Pit Rescue Trailer has been built to handle the harshest of conditions.



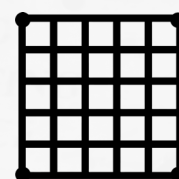
SUPPORT LEGS

Two support legs are installed on the rear to support the trailer when loading/unloading TED.



STORAGE COMPARTMENTS

Eight easily accessible storage pockets are available for operators to store and transport attachments or tools.



CARGO NET

With multiple tie down points the 1 Tonne, heavy duty cargo net is easy to fit and will secure all loads during transport.

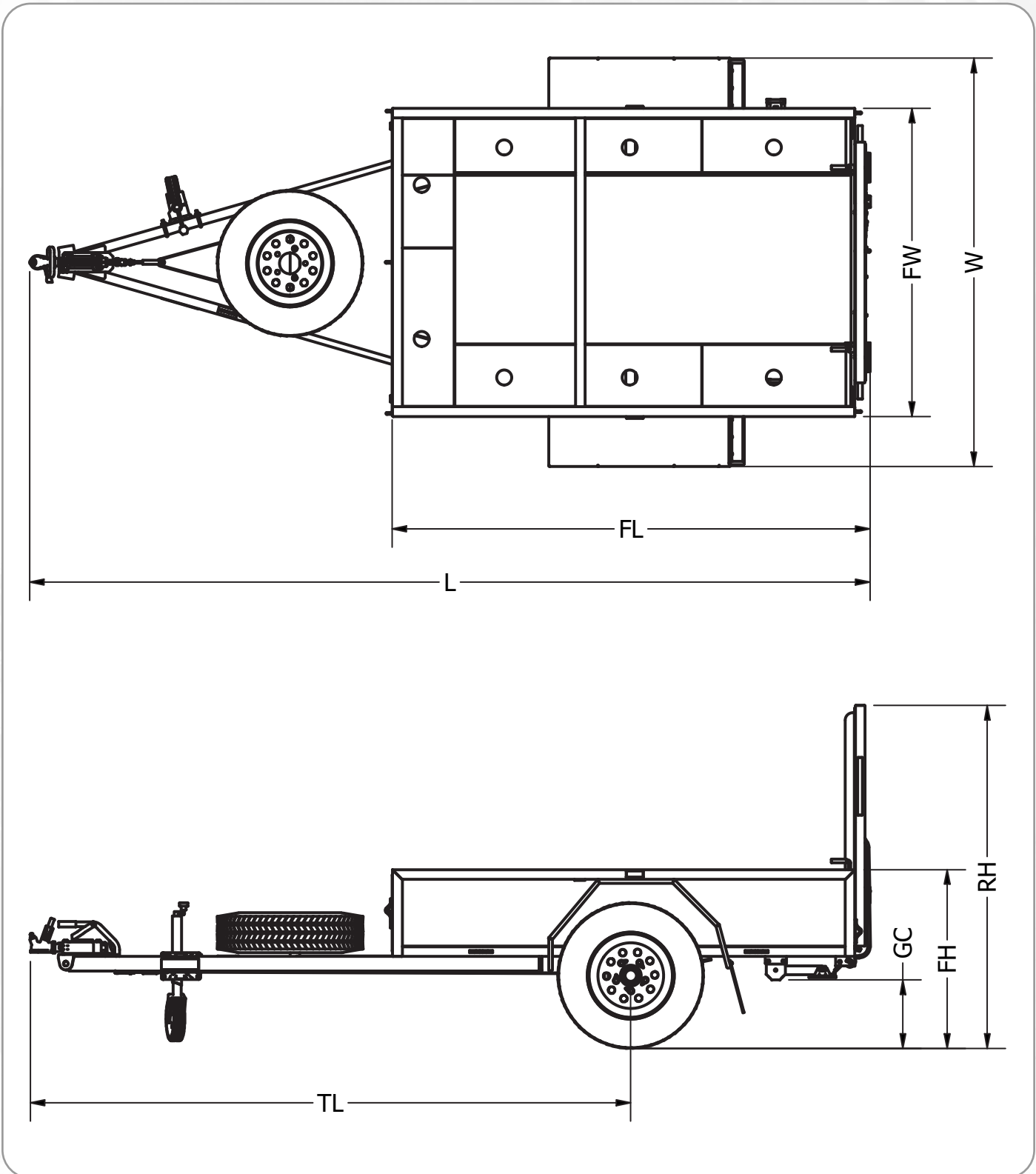
SPECIFICATIONS

Tare weight (kg/lbs)	660 / 1,456
Payload (kg/lbs)	940 / 2,073
GVM (kg/lbs)	1,600 / 3,528
Brake System	Lockable mechanical brake
Wheel	Landcruiser 5 stud rim 227/75 R16 Tyres
Spring	Leaf Spring
Tow Hitch	Trailer Coupling Plated (Ball Hitch) 2,000kg rating
Ramp	Spring assisted tailgate with spring loaded latches
Cargo Net	1,000kg / 2,200lbs rated cargo net



DIMENSIONS (MM/INCH)

Length (L)	4,360 / 171.7	Frame Length (FL)	2,480 / 97.7
Width (W)	2,120 / 83.5	Frame Width (FW)	1,600 / 63
Ramp Height (RH)	1,780 / 70.1	Ground Clearance (GC)	355 / 14
Frame Height (FH)	925 / 36.5	Length to Tyre (LT)	3,120 / 122.9



Big TED

